

Impact of implementing "Safe Community" project in a Japanese community

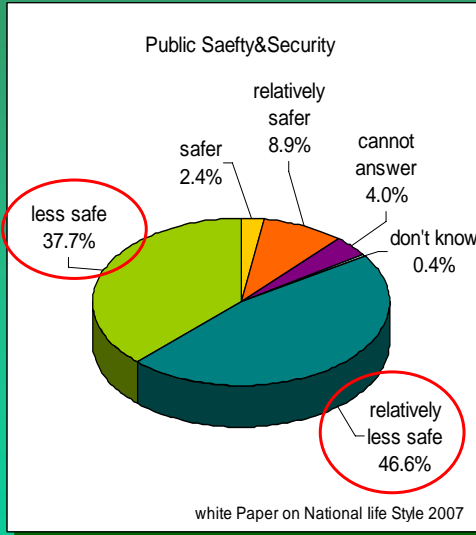
From a challenge of Kameoka City

Yoko Shiraishi
Mature Life Institute
Ritsumeikan University

Contents

1. Current situation of Safety in Japan
2. Increasing interest in Safe Community
3. Challenge of Kyoto P. and Kameoka C.
 - Findings from the challenges by Kameoka
 - Result of questionnaire survey
 - Effect of Workshop in a Pilot community
4. Discussion
5. Conclusion

1. Current situation of Safety in Japan



○ Is Japan becoming safer ?...

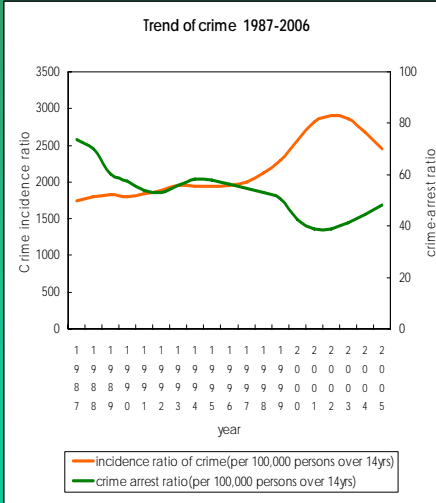
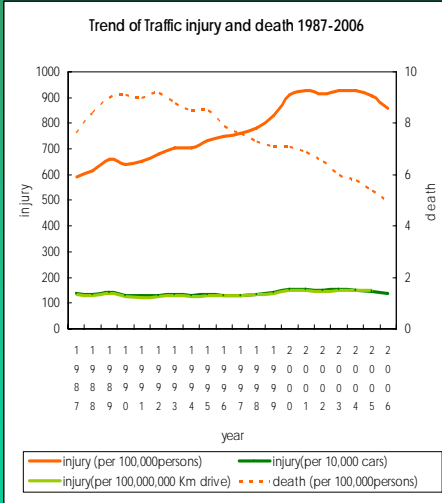
○ 85% feel less safe, compared to before

(White Paper on National Life Style 2007)

Why people feel less safe?

1. Current situation of Safety in Japan

○ trend of decline of safety in terms of



1. Current situation of Safety in Japan



Japan has been working on safety promotion in various fields



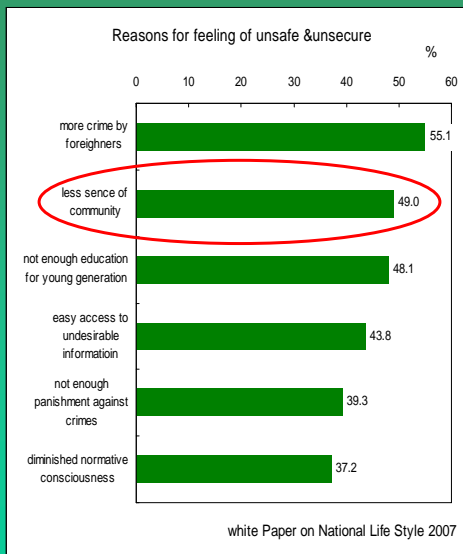
Has achieved higher level of safety as a whole



but...

For the last few decades,
 - some decline in safety
 - need further challenge

(1) Why people feel less safe ?



One of main factors which make people feel less safe is ...

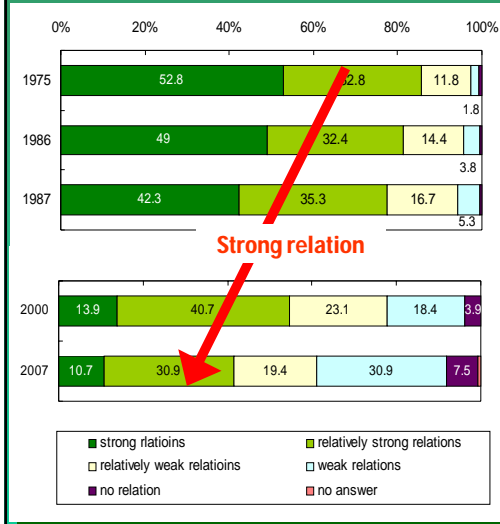
weakened relation /bond with neighbors.



Various influence factors in communities

cf. Urbanization,
 change of peoples' life style
etc.

(2) Relationship with others



○ Relation/bond in neighborhood is becoming less strong.

○ People don't associate with neighbors as much as used to be

Mature Life Institute

6

- ✓ While there are various issues which effect on safety in the society....
- ✓ Weakened bond in neighbors is a factor which make people worry about safety



Can relations among community members contribute to safety promotion ?

Mature Life Institute

7

(3) From our experience...

● Great Hanshin Earthquake on Jan. 17, 1995

- It hit the Kobe area in very early morning
- About 30,000 people were buried under ruins of buildings

● After the earthquake, probability of survival was largely effected by how soon people were rescued

- within the day;69%, the 2nd day;24%, the 5th day;4%

● The damage was too big to be covered by public rescue services only

Mature Life Institute

8

Who rescue people in need of help?

● 98% were rescued by families and neighbors

- In Hokudan-cho (10,000 inhabitants, magnitude 7.3)

- Over 90% of buildings were collapsed

- Within 7 hours, before public rescue team arrived, all missing had been found

- 39 people killed, 870 people injured

- Immediate rescue by community members could minimized the human damage

- Residents had information about who were in which rooms of collapsed houses.

- The information was gained through usual socialization with neighbors

Mature Life Institute

9

(4) What we learned from the experience

Cooperation among community members
perform effective rescue work

more interest in

Potential of “Social Capital” in communities

Another reason ...

**Governments have been facing difficulty in providing
enough services for improvement of well-being**

- Financial problems
- Strong trend of decentralization of authority
- Diversification of needs and values for well-being

2. Increasing interest in Safe Community

○ There is NO designated Safe Community yet.

→ Related fields with safety have worked on safety improvement on their own and have attained higher level of safety to some extent



○ There is improving interest in SC

→ Kyoto Prefecture decided to take the SC initiatives to pursue their political goals

3. Challenge by Kyoto P. & Kameoka C.

- Kyoto Prefecture decided to take a model of SC to pursue their political agendas.
 - Proposed SC to municipalities with 3 benefits
 1. Improve safety
 2. Reduce expenses in medical and Public Health
 3. Reestablish relation among community members
- Kameoka City was appointed as a pilot municipality for the Safe Community project
 - to establish a model of SC in the Japanese context
 - Then, expand SC movement to other municipalities in Kyoto

(1) Overview of Kameoka City



(1) Overview of Kameoka City

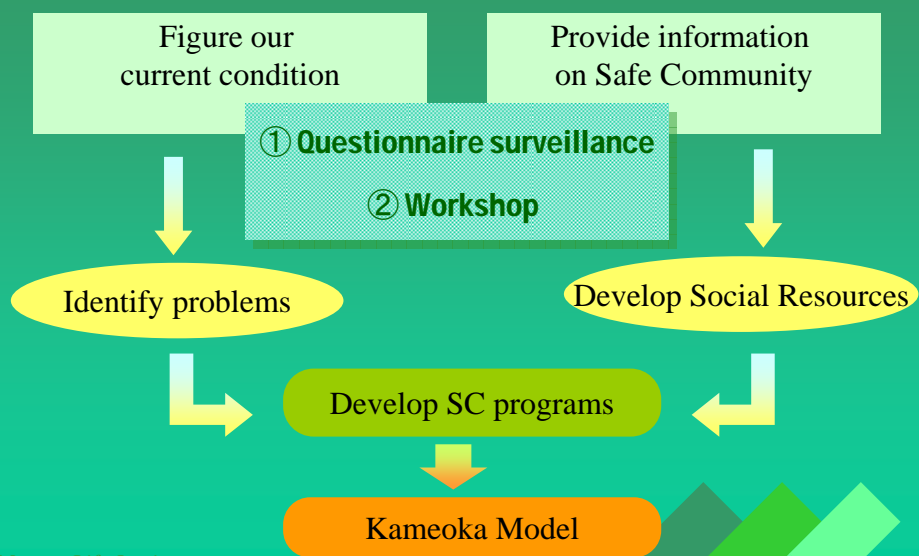


- Kameoka City is located next to Kyoto City.
 - Suburb area
- Population is approximate 100,000
 - Aging rapidly
 - Over 65 yrs : 16.1%
- Good accessibility to Osaka and Kyoto
 - Heavy traffic
- Abundant in Nature
 - Used to be suffered by natural disasters

Mature

14

(2) Process of SC project at Kameoka



Mature Life Institute

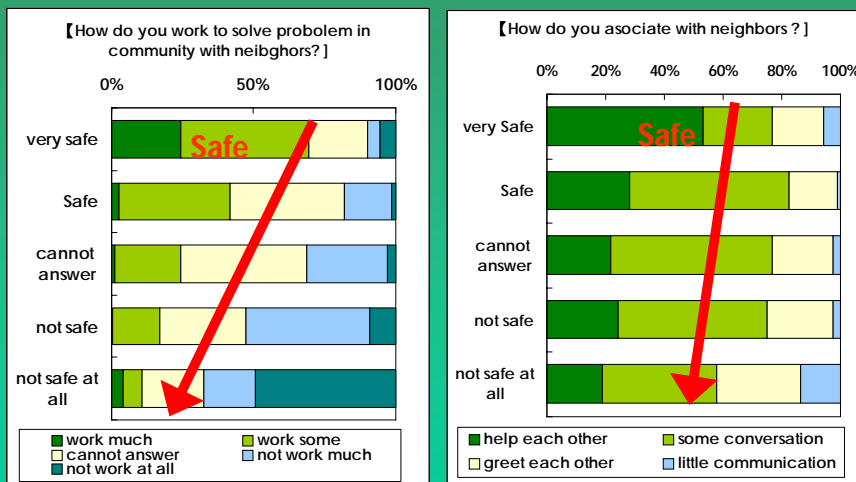
15

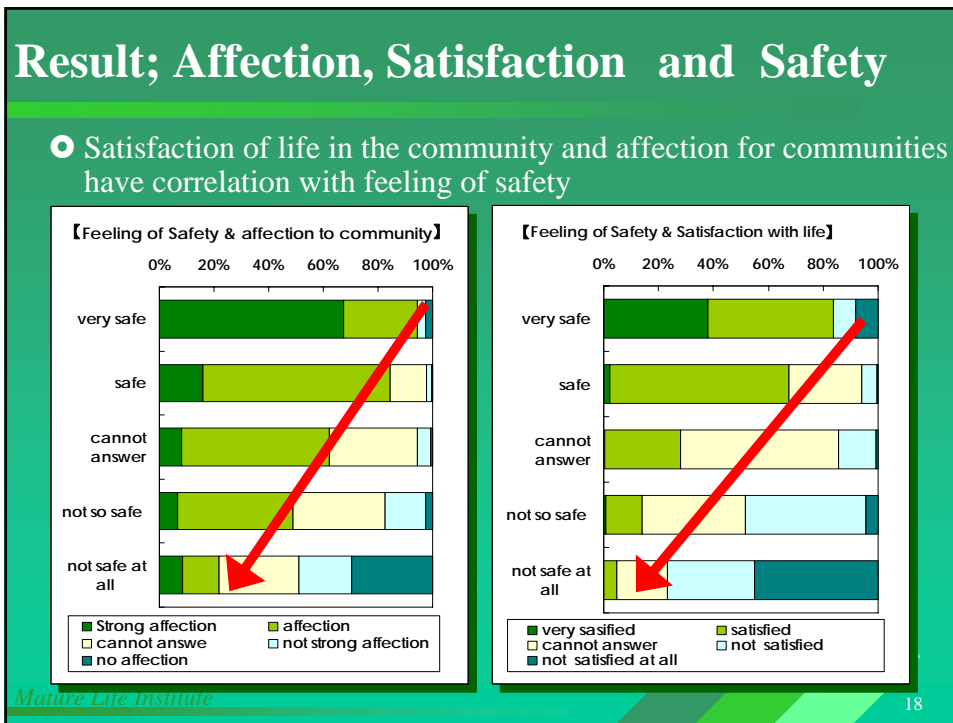
① Questionnaire surveillance

- Target ;
 - all households (29,671) in the city and their family members aged over 18 yrs old
- Survey slip ; (1) Household, (2) Individual
- Methods;
 - delivered to each household by volunteers, then collected by mail in about 3 weeks
- Collection rate: 24.2% (7,157 households)
 - Higher than expected

Result; Community activity and Safety

- People involved in community activities tend to feel more safe





② Workshop at a pilot neighborhood

- To develop safe community based on voice from community
 - To set up opportunities for residents to get involved in safety promotion
- ↓
- Set up a series of workshop at a pilot area
 - Shino-Cho (population; 18,000)
 - 2hr × 4 times
 - Participants; individual, organizations, ...etc.
 - 60-70 participants (expected about 30 at most)

Mature Life Institute

20

1st meeting:

Identify and share problems in their neighborhood

- Children and elderly's safety
- Traffic Safety



2nd meeting:

Set up goals

- Improve safety based on communication among residents



3rd meeting:

Develop strategies

- Find social resources
- Develop plans to reach their goals

Mature Life Institute

21

Result ;

- Residents became more concern about safety and identify problems from the viewpoint of community.
 - Traffic Safety, Children& Elderly' Safety
- They became to think what to be done for community safety promotion
 - Discussion on How to improve safety with what they have in communities

Residents learn “what they can do”
and “what they should do”
at individual or community levels

cf. arranged a system to look after seniors who live alone
→ more information at the presentation in the afternoon

Mature Life Institute

22

4. Discussion

- **Safety promotion in Japan**
 - Has been conducted by mainly governments at section levels
 - Each field pursues higher level of safety on its own
 - Needs community involvement for community-based approach and effective performance
 - Lack of resources & Financial matters

Make good use of resources in communities

Potential in “Safe Community” Strategy

Mature Life Institute

23

