

International

Safe **S**chool



**Atsugi Municipal
Shimizu Elementary School**

November 2010

**Application report for Designation as
a member of International Safe School**

Symbol of Shimizu Elementary Safe School

The symbol logo of Safe School Project was deigned with Sun flower, School flower of Shimizu Elementary School, and shape of the school by a student.



The Student board set up the symbol of ISS project among applied logos by students.

The symbol logo is a school smiling in a helmet with hope of all students' safety. The helmet has a mark of school flower and the body has ISS(International Safe School) in three colors of traffic right, blue, yellow and red.



Make Shimizu Elementary School Brilliant, Safe and Secure for Shimizu kids

A big Himalaya cedar tree at the center of our school yard has been a symbol of Shimizu Elementary School. It has been cherished and cared by community people over 130 years. Although the school used to be surrounded by rice farms, our community now becomes a residential area with three national routes running through. So over 900 students are now exposed under various risks including traffic accidents on their ways between school and homes, being targeted by suspicious individuals and so on.

Seven traffic accidents in 2008 is one of examples of those unpleasant situations. So, we decided to start to protect our children from traffic accidents by promoting helmet wearing, improving bicycling skills and so on, in collaboration with the Shimizu Kids Sound Network Meeting. After some years of our efforts, the network was appointed as a pilot program of Atsugi Safe Community projects. Further effort of safety promotion based on the strategies of Safe Community brought us big success in decrease of traffic accident as seen only one accident in 2009.

When we learned about movement of the International Safe School (ISS) which contributes to improvement of safety at school settings, we had no doubt about introducing the movement. When we examined about situation of safety at our school with the concept of ISS, we found that there were as big number of injuries as 5,636 cases in 2008. Therefore, we realized that we should take action to prevent those accidents.

Considering that school is a place where children study and play, safety should be given the highest priority. Therefore, children, parents, school staff, teachers and all community members are all wishing our school becoming a safe place. Putting effort for safety promotion to become a member of ISS network is a step to realization of our ideal. Our success in safety promotion will expand the movement of safety promotion to other schools in the City, in Kanagawa Prefecture and further, and then our children with bright future can grow in safe environment.

September 2010

清水学校長 志佐光正

Principal

Atsugi City Municipal Shimizu Elementary School



Establish Safe Environment for Children in Coproduction among School, Parents and Communities

In Feb. 2010, Shimizu Elementary School officially launched safety promotion programs based on the concept of International Safe School by applying many years of experience and effort in making school environment where all everyone enjoy safety. It was the first trial among municipality schools in Japan.

This challenge reminds us the importance of further effort to make our school safer in collaboration among our school, parents and the community and confirm our commitment to our common goal, making our school safer place for children.

Our Shimizu Elementary School can be featured by effort for safety improvement with leadership of Shimizu Kids Sound Network meeting, a collaborative group of community members and teachers, in traffic accidents prevention and crime prevention which can be solved only by cross sectional corporation.

With achievement of noticeable decrease of suffered children by traffic accidents and behaviors by suspicious individuals, each student has been learning what to do for safety promotion through their daily lives and activities. Students are now feeling importance of safety and being able to live in safe environments.

To provide safety to all children with bright future, I wish that effort by Shimizu Elementary School with partnership among the school, parents and community will become a model of improvement of safety at school setting and spread to other elementary and junior high schools in the city.

At the last, I would like to express my appreciation to all our supporters to lead Shimizu Elementary School becomes a member of the International Safe School.

September, 2010

教育長 平井 広

Hiroshi Hirai
Atsugi City School Superintendent



Make Schools safer and more active through efforts to become a member of the International Safe School Network

Atsugi City has been putting special effort for safety promotion based on the concept of Safe Community since April 2008. It is because that the concept of Safe Community, accidents and injuries are not results from a chance and can be prevented, matches to the goals of Atsugi City. Therefore, we are quite sure that working toward SC designation results will strengthen community's bond, activate of community movement for safety promotion and improve quality of our lives.

Accompanying to effort for Safe Community, Shimizu Elementary School started to work for improvement of safe at school settings based on the concept of International Safe School. This challenge has been lead by Shimizu Kids Sound Network Meeting, the network among parents, school staff, community groups and residents, and reached success with participation to Safe Community Projects as a pilot program of children's safety. I strongly wish Shimizu Elementary School will take a good leadership for children's safety, school safety and community safety among municipal schools in our city.

It is every one's wishes to make educational environment safe and secured. So, it is our responsibility to provide children with safe learning environment where they don't need to worry about accidents and injuries.

I would appreciate and pay great respect to all efforts for safety promotion by Shimizu Elementary School and related organization and individuals. With their efforts for safety promotion, we , Atsugi City, will put forth every effort to make Atsugi City lively in collaboration with all community members and to become a member of the International Network of Safe Community. Being designated as a member of Network of International Safe School and Safe Community is not our final goal. We are just about to stand at a starting point for making our community really safe and lively.

September. 2010

厚木市長 小林 常良

Tsuneyoshi Kobayashi

Mayor

Atsugi City

Index

I. Profile of Shimizu Elementary School	1
1. School Emblem	1
2. Pupils	1
3. Geographical features	2
II. Activities to become a member of International network of Safe School	3
1. Background	3
2. Approaches for Safe School	4
3. History of Safe School activities	5
III. Situation of Injuries	6
1. Analysis of Injury Data Collected by School Nurse	6
2. Survey on Helmet Use on Bicycles	9
3. Attitude survey of students (traffic safety)	12
4. Attitude survey of students (bullying and violence)	14
5. Grasping Current situations by workshop	16
IV. Challenges and Goals	18
1. Priority Setting	18
2. Goals	19
V. Activities based on 7 indicators	20
Indicator 1	20
Indicator 2	24
Indicator 3	26
Indicator 4	32
Indicator 5	34
Indicator 6	36
Indicator 7	38
VI. Future Perspective	39
1. Long Term Goal	39
2. Future Development	39

I. Profile of Shimizu Elementary School

Shimizu Elementary School is located at the center of Atsugi City. It has long history and tradition of over 130 years old with support from community. Based on these back ground, Shimizu Elementary School has been working to make the school respected and trustworthy for community.

A Himalaya cedar at the play ground has been respected as a symbol of Shimizu Elementary School by community. The school also has a 500



Himalaya cedar, a symbol of the school

years old camphor tree and Yakushi-do Hall designated cultural property by the city in Tsumada Yakusi Temple neighboring to the school.

1. School Emblem



The School emblem was made in 1915 when the school was moved from Tsumada Yakusi Temple's ground to the present location to celebrate a new school building.

The emblem was designed with Stream and chrysanthemum after a stream from a spring and an old camphor in the property of the Tsumada Yakusi Temple by a school staff. The design with chrysanthemum and water called "Kikusui" is known as family emblem of the Kusunokis, well known warlord in the history.

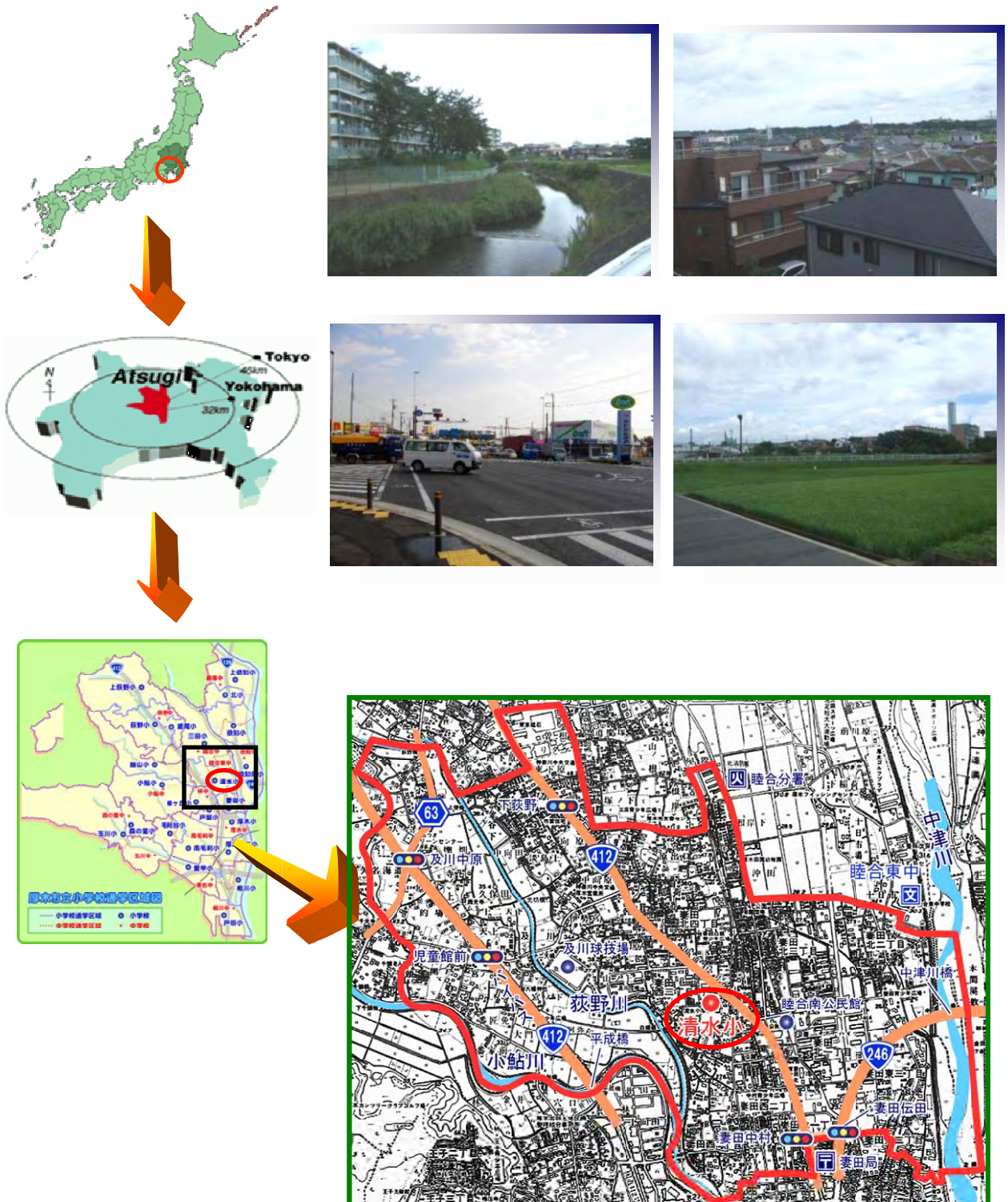
2. Pupils

Table 1. number of student (as of May 1st 2010)

	# of Class	Class1	Class 2	Class3	Class4	Class5	Total
Grade 1	5	31	31	31	32	31	156
Grade 2	5	31	32	33	33	33	162
Grade 3	4	34	35	35	35		139
Grade 4	5	33	34	33	33	33	166
Grade5	4	37	36	36	36		145
Grade 6	5	28	29	29	29	29	144
Class for handicapped	4	8	4	1	1		14
Total	32						926

3. Geographical features

Shimizu Elementary School is located at the center of Atsugi City which is 3km north of Hon-Atsugi Station, the main station in the city. The neighborhood of Shimizu Elementary is located between two rivers; Nakatsu River on the east and Koayu River on the west, and has busy traffic with two national routes, #412 and #246 run through the area.



II. Activities to become a member of International network of Safe School

1. Background

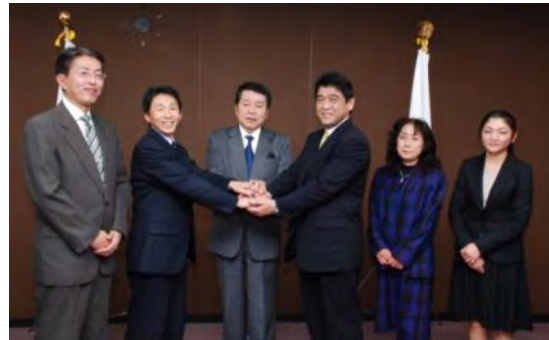
Shimizu Elementary School has been undertaking various efforts on children's safety promotion such as setting up a network of safety promotion named "Shimizu Kids Sound Network"

Although after many years of effort for safety promotion, seven traffic accidents with school children were reported in 2008. Out of them, 6 accidents were caused while children were on the bicycles. Regarding to those accidents, Shimizu Elementary School started to put extra effort on safety on bicycle besides existing safety promotion activities.

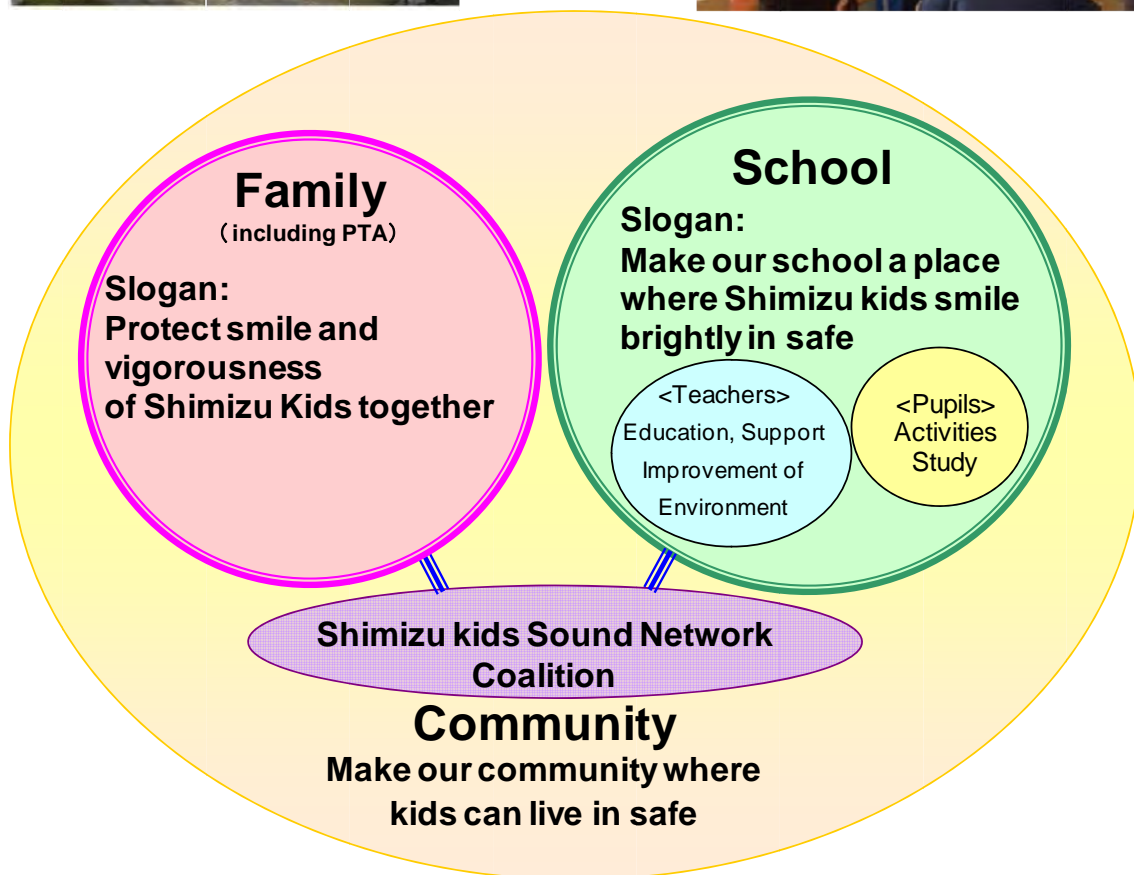
On the same year, since helmet use of elementary school students and infants became mandatory. Therefore by revision of Road Traffic Act, the movement of improvement of helmet use on bicycles becomes more accepted.

In 2009 when Atsugi City had started to work for safety promotion based on the concept of

Safe Community, Shimizu Elementary School became one of pilot programs of Atsugi City Safe Community project. It was because the concept, experiences and approaches for safety promotion at Shimizu Elementary School was found very much in common with those of Safe Community. While working for safety promotion as a pilot program for Safe Community project, the school gained opportunities to learn about the International Safe School (ISS) and its designation system. Then the school learned that setting designation as a member of the International Safe School can be a good way to improve awareness of safety and to develop activities and programs systematically and effectively. By introducing ISS approaches, with stronger partnership, the school is now working for safety promotion along with Safe Community projects by Atsugi City. As a result of their continuous effort, traffic accidents which school children involved in their community decreased to one in 2009.



2. Approaches for Safe School



3. History of Safe School activities

2006	Set up Shimizu Kids sound network coalition
Nov. 2008	Conduct survey on bicycle helmet use
Nov. 2008	Make Presentation on their activities for safety promotion at the forum on safety promotion hosted by Atsugi City
Feb. 2009	Experts of Safe Community visited to Shimizu Elementary School Prof. JoonPil Cho, Prof. Lu Pai and Prof. Shumei Wang
March 2009	Pay Study visit to Safe Schools in Taiwan
April 2009	Shimizu kids Network Coalition is assigned as a pilot program for Safe Community
Aug. 2009	The 1 st Workshop for Safety Promotion based on the Concept of Safe Community
Sept. 2009	The 2nd Workshop for Safety Promotion based on the Concept of Safe Community
Sept. 2009	Make a presentation on Safety Promotion activities at “the 13th Integration Forum 2009” in Kanagawa(Atsugi City)
Oct. 2009	The 3rd Workshop for Safety Promotion based on the Concept of Safe Community
Nov. 2009	Make a presentation on activities at the Atsugi Forum toward Safe Community (Atsugi City)
Nov. 2009	Pay study trip to a Safe School in Korea
Jan. 2010	Officially announce launch of activities to be a member of the network of International Safe School
Feb. 2010	Make an oral presentation about safety promotion activities at the 31st Conference on PTA activities at elementary and junior high schools in Atsugi
March 2010	Participate to the International Safe School designation ceremony at Ikeda Elementary School attached to Osaka Kyoiku (Normal) University
March 2010	Participate to the Forum for improvement of Safety at Schools in Asia and Pacific region at Ikeda Elementary School attached to Osaka Kyoiku(Normal) University(Osaka, Japan)
March 2010	Make a poster presentation at the 19 th International Conference on Community Safety Promotion (Suwon, Korea)
June 2010	Safe Community experts visit the school as on-site evaluation for the international Safe Community designation
Aug. 2010	Invite Ikeda Elementary School which is the first ISS designated school in Japan to study about Safe School

III. Situation of Injuries

1. Analysis of Injury Data Collected by School Nurse

5,636 injury data reported at school nurse's office between April 1st 2008 and March 31 in 2009 was analyzed.

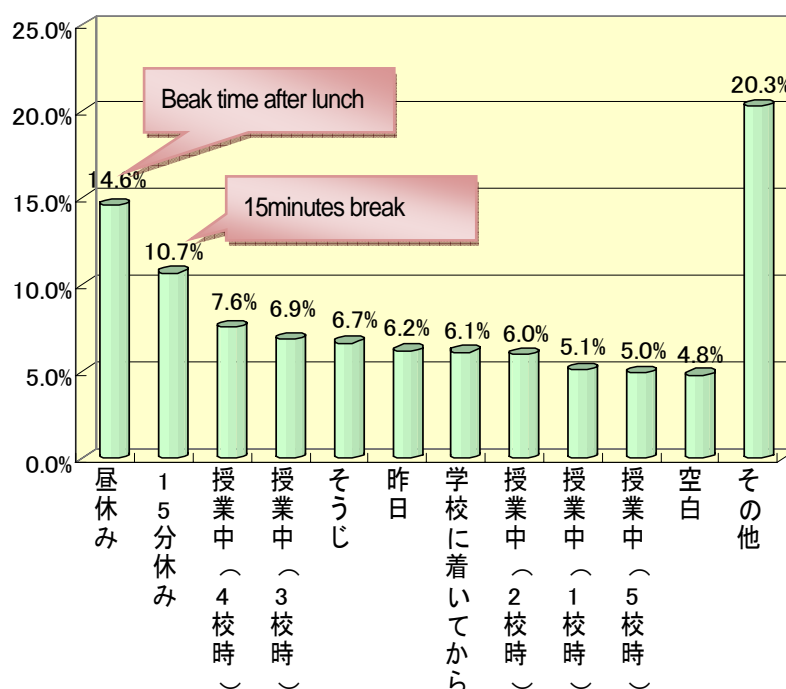
Format for injury record at school health center

The form is titled 'けが' (Injury) and includes fields for '年 組' (Year and Class), '★ 月 日 曜日' (Month, Day, Day of Week), and '★ けがをした時刻' (Time of injury). It contains several sections for recording details:

- 1 けがをしたのはいつ? (○をつける)** (When did the injury occur?): Includes options like '朝起きた時' (When I woke up in the morning), '登校中' (During school hours), '学校についてから' (After arriving at school), '授業中 (1, 2, 3, 4, 5, 6校時)' (During class), '15分休み' (15-minute break), '給食' (Lunch), '昼休み' (Lunch break), '帰る時' (When going home), 'そのう' (Somewhere), 'ずっと前' (Long time ago), and 'わからない' (Don't know).
- 2 けがをしたのはどこで?** (Where did the injury occur?)
- 3 けがをしたのはどうして?** (Why did the injury occur?)
- 4 けがのしるい (○をつける)** (Signs of injury): Includes options like 'すりきず' (Abrasion), 'ひききず' (Laceration), 'ささくれ' (Splinter), '腫のけが' (Swollen injury), '虫さされ' (Insect bite), 'かゆみ' (Itch), 'その他' (Others), 'だぶく' (Bruise), 'つきゆび' (Finger injury), 'おんざ' (Burn), '目のけが' (Eye injury), '出血' (Bleeding), '夢め' (Dream), '皮膚け' (Skin injury), 'いたみ' (Pain), '筋肉痛' (Muscle pain), 'はなち' (Nosebleed), 'やけど' (Scald), 'とげ' (Puncture), and '皮膚け' (Skin injury).
- 5 けがをした体のぶぶん (しるしをつける)** (Part of the body injured): Includes options like 'あろう' (Forehead), 'しっぽ' (Back), 'ひやせ' (Arm), 'かみどめ' (Hair), '筋肉痛の痛' (Muscle pain), '帽子をみる' (Looking at hat), and 'その他' (Others).
- 6 しるし (○をつける)** (Signs): Includes options like 'あろう' (Forehead), 'しっぽ' (Back), 'ひやせ' (Arm), 'かみどめ' (Hair), '筋肉痛の痛' (Muscle pain), '帽子をみる' (Looking at hat), and 'その他' (Others).

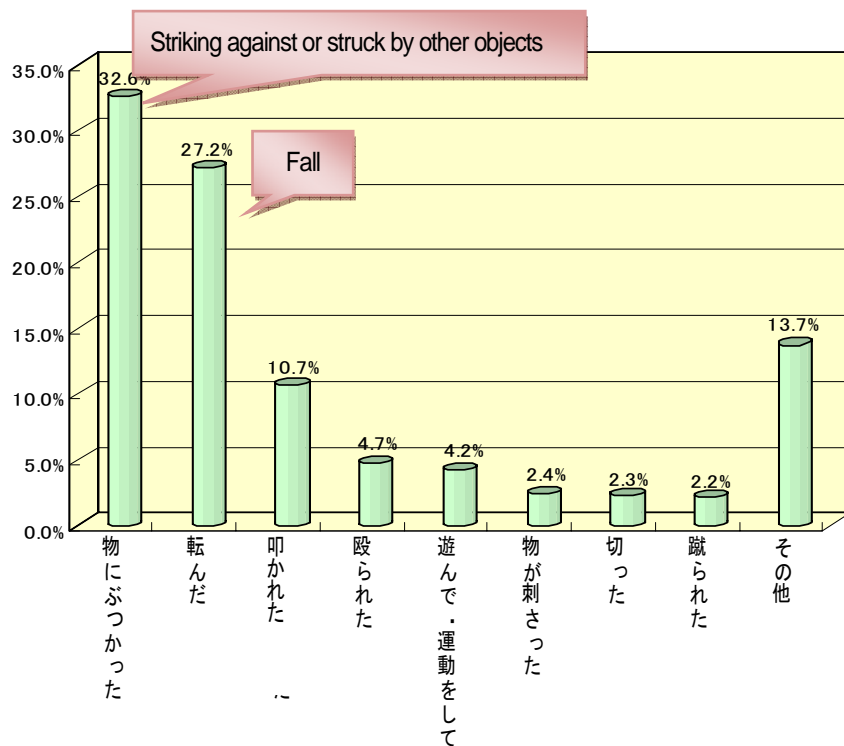
■ Time of Injuries occur

Break time after lunch is the time when injuries occur most frequently (15%), followed by 15 minutes break (11%).



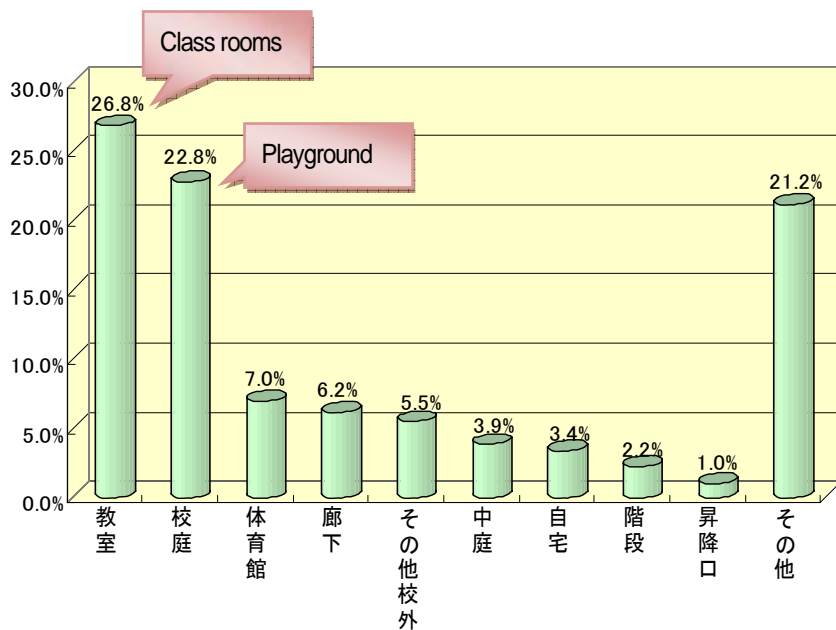
■ Causes of injury during lunch break;

Striking against or struck by other objects ranked top as 32.6% followed by fall as 27.2%.



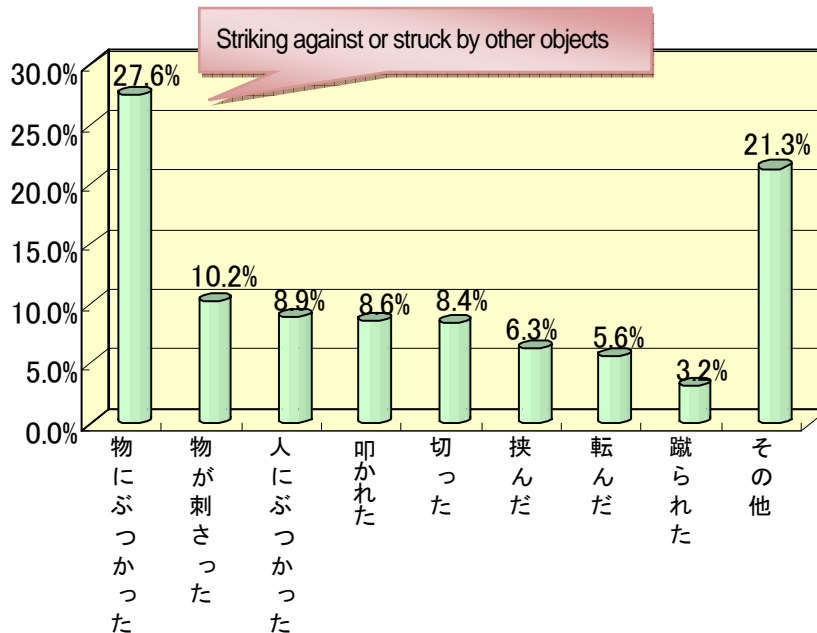
■ Places of injuries

Class rooms are ranked top as 27%, followed by playground as 23%.



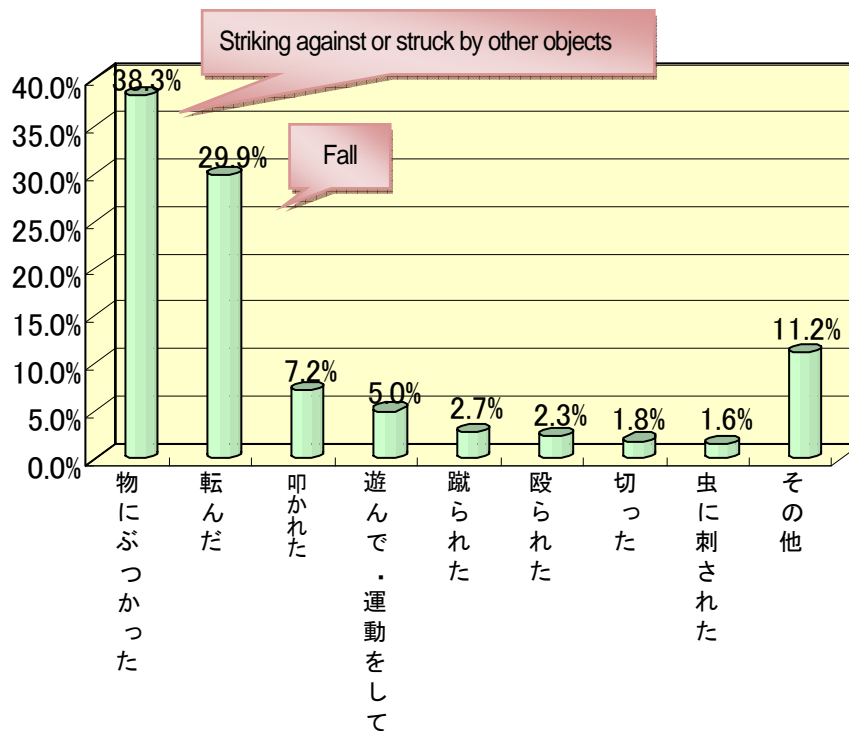
■ Major cause of injury in class rooms

Striking against or struck by other objects is the main cause in classrooms.



■ Major cause of injury at play ground

Top cause of injuries at the playground is Striking against or struck by other objects as about 38%, followed by fall as about 30%.



2. Survey on Helmet Use on Bicycles

2-1. Outline of the Survey

- Date of survey : November 2008
- Methods : distribute questionnaire sheets to students
- Sample : 902 sheets (all pupils)
- valid response : 902 (100.0%)

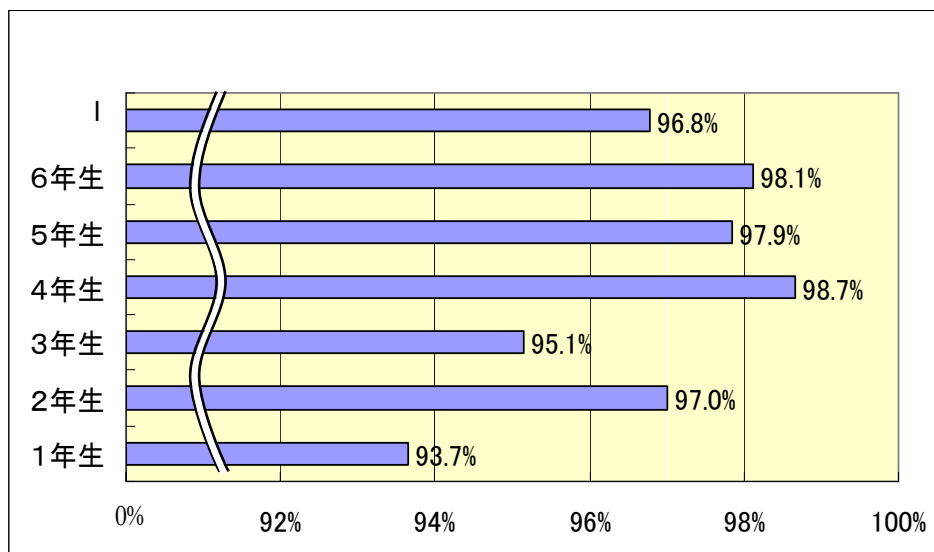


2-2. Results

Analysis of the survey on helmet use on bicycles reveals the followings;

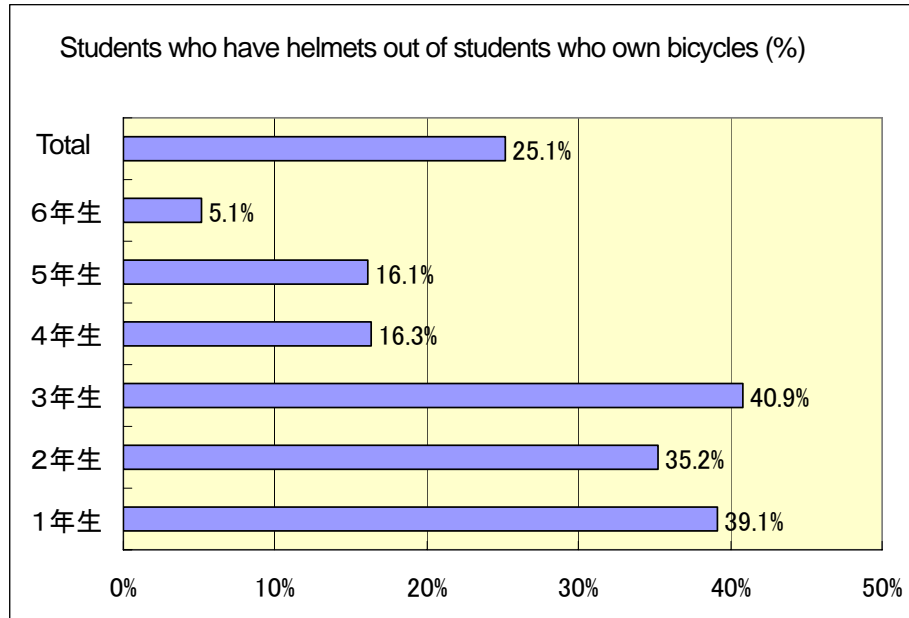
■ Students who own bicycles

Almost all students (over 90%) own bicycles.



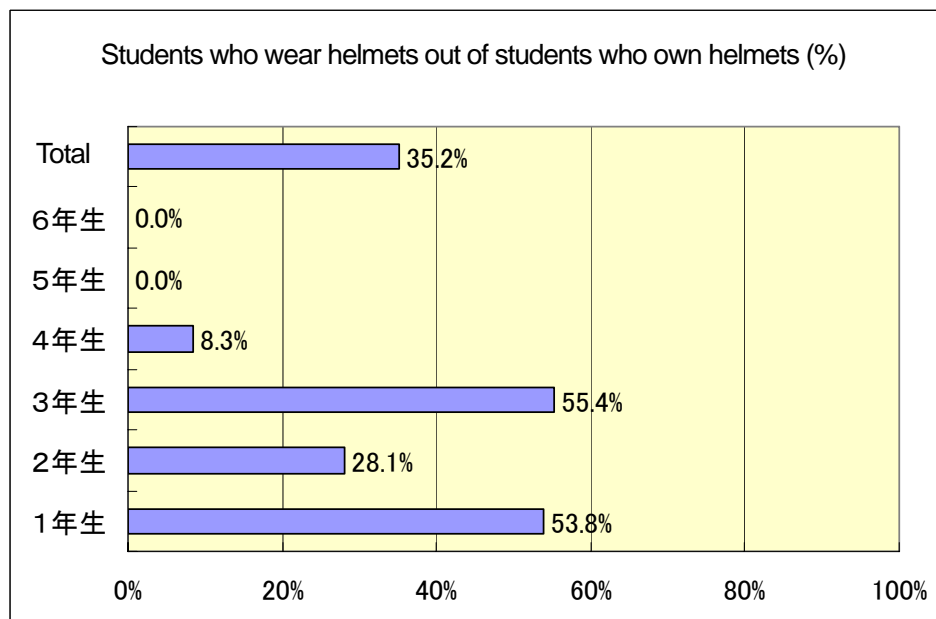
■ Ratio of students who have bicycles helmets

Out of students who has bicycles, those who have bicycle helmets take 40% at grade1, 2 and 3, less than 20% at grade 4, 5 and 6.



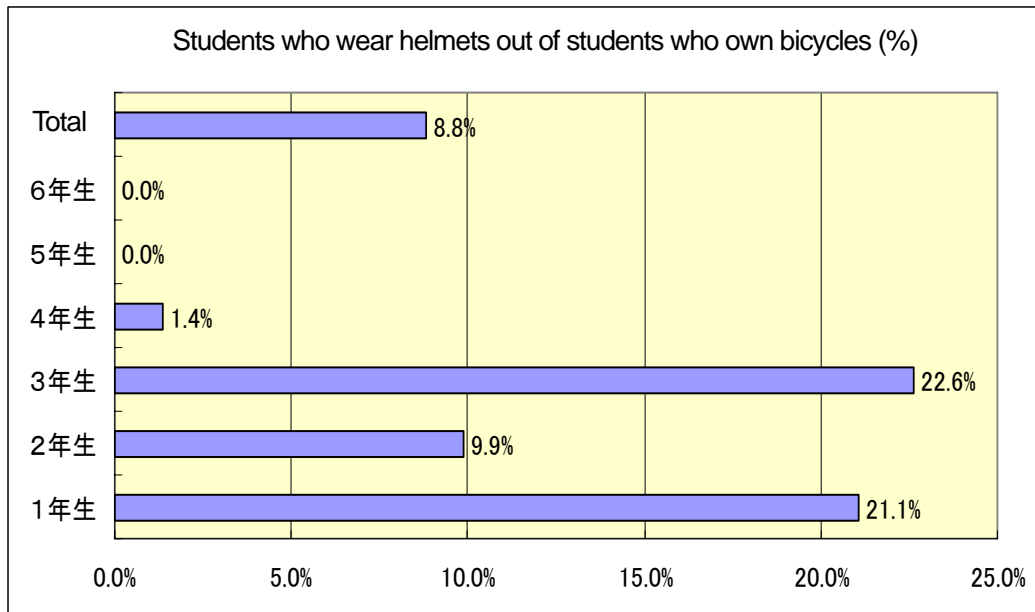
■ Ratio of students who wear bicycles helmets (1)

Out of students who has helmets, 40% wear helmets at grade1,2, and3, less than 10% at grade4,5, and 6.



■ Ratio of students who wear bicycles helmets (2)

Out of students who have bicycles, only 8.8% of those wear helmets on bicycles. Students in the lower grades tend to wear more than those in the upper grades.



3. Attitude survey of students (traffic sfety)

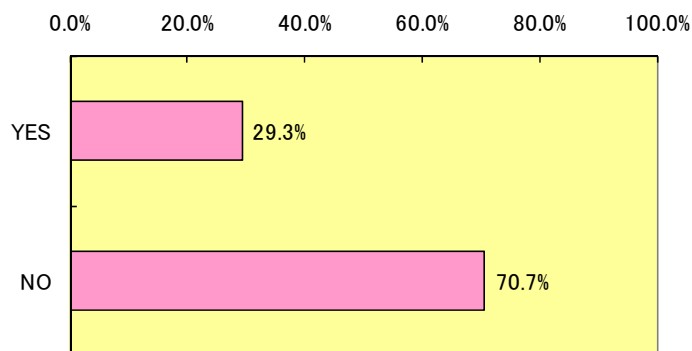
(1) Outline of the survey

- Date : July 2010
- Methods: Grade1 and 2 : asked questions by oral and ask answers by rising hands
Grade 3 to 6: distributed and collect question sheets
- Samples: 894 (all students)
- Valid answer: 894(100.0%)

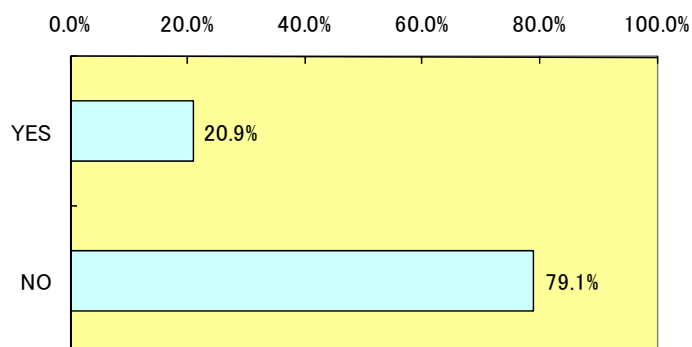
(2) Results

■ Do you cross roads against the red light?

Grade1&2 students

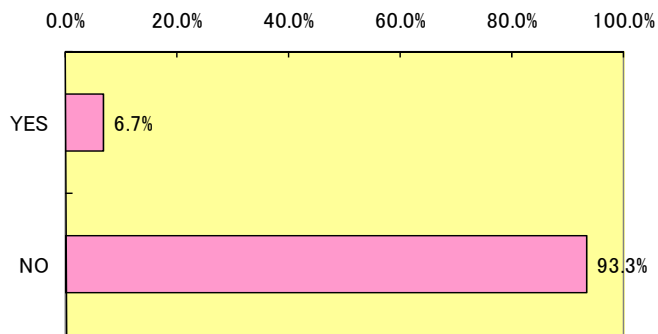


Grade3 to6 students

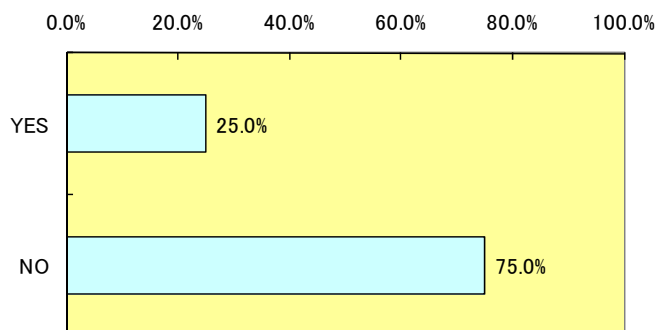


■ **Do you cross roads even when there is the pedestrian overpass nearby?**

Grade1&2 students

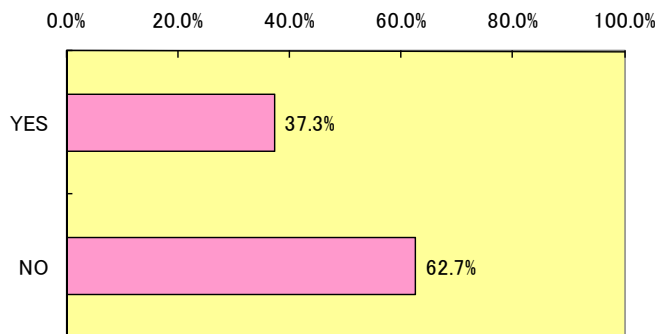


Grade3 to6 students

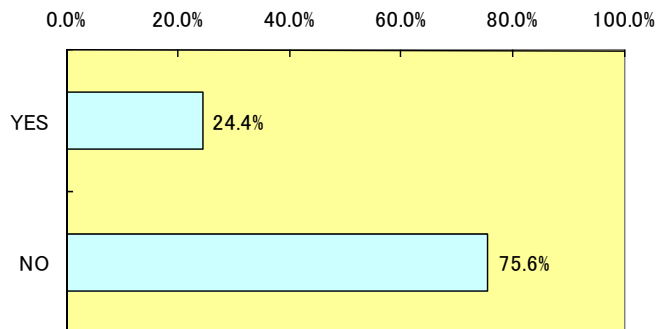


■ **Take a crime prevention buzzer when play with friends after school or on weekends**

Grade1&2



Grade3 to6



4. Attitude survey of students (bullying and violence)

(1) Outline of the survey

- Date : July and December in 2008, July in 2009, and July n 2010
- Methods: Distributed question sheets to all students and collect by hand
- Samples: All students

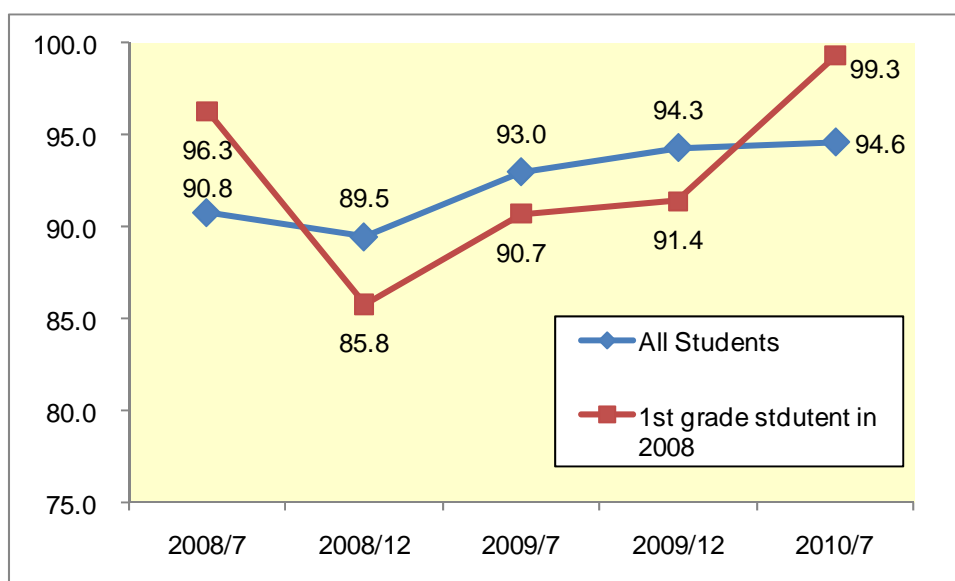
Cf. students in July 2010

	Grade1	Grade2	Grade3	Grade4	Grade5	Grade6	Total
number	154	161	136	166	141	142	900

- Valid answer: 100.0%

(2) Results

■ Students who are in good terms with their friends at school?



Over all, students tend to have good relationship with others. However, it should be also noticed that that there are some students who cannot have good time with their classmates and friends. In there days, more violence and bullying have been found at schools. Those cases might be result of trivial troubles or misunderstanding among students. Therefore, it is important to establish environment in which no violence and bullying is allowed.

[Reference]

According to the Ministry of Education, the followings are result of survey on bullying and violence at schools in 2008.

- Sample: 22,476 elementary schools
- Schools which found cases of bullying: 7,438 schools
→Cases of bullying: 40,807 cases (8,089 cases decrease from previous year)
- Schools which found cases of violence at school: 1,564 schools
→Cases of violence: 5,996 cases (1,189 cases decrease from previous year)

Source: Ministry of Education "Survey on problems in guidance of students with problematic behaviors" 2008

5. Grasping Current situations by workshop

5-1. Outline of workshop

a. Participants

There were about 30 participants;

- Teachers
- PTA
- Representatives from community organization
- Representatives from organizations related to traffic safety

b. Venue

Shimizu Elementary School

c. Dates

The 1st Meeting: 18:30~20:30 on Aug. 5, 2009

The 2nd Meeting: 18:30~20:30 on Sept. 11, 2009

The 3rd Meeting: 18:30~20:30 on Oct. 6, 2009

5-2. Process of the Workshop

a. 1st Meeting; “Let’s learn about our community!”

Step 1: Make groups of 5~7 people

Step2: Group work

- Share problems in our community
- Share information about social resources (facilities, organizations, services, activities)
- Share good points about communities

Step3: Presentation on group work



b 2nd Meeting “Let’s think about problems”

[Group work]

Step1;

Share information about “what we have done”, “what we are currently doing” and “What to be done in future” for safety promotion.

Step2;

Discuss about roles and responsibilities of “Community” “School” “Local Government(Atsugi City)” and others such as families, businesses.

Step3;

Presentation of group work

c 3rd Meeting “Let’s discuss about Solutions!”

[Group work]

Step1;

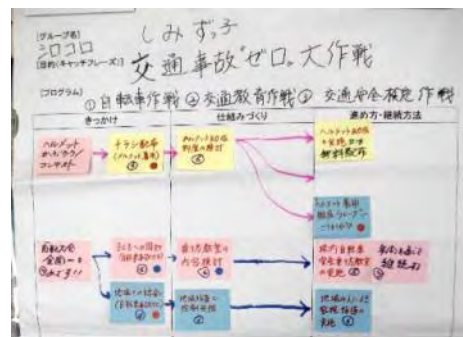
Discuss about “How to get activities started” “How to get activities work” and “How to make activities sustainable”

Step2;

Discuss about roles and responsibilities of “Community” “School” “Local Government(Atsugi City)” and others such as families, businesses.

Step3;

Presentation of group work



IV. Challenges and Goals

1. Priority Setting

1-1. Problems drawn by injury surveillance at School

- Injury prevention at break time including after lunch time

Injuries tend to occur during break times such as lunch break.

→ A major cause of injuries is striking against or struck by other objects

- Injury prevention at Class rooms and play ground

Many injuries occurred at class rooms and play ground

→ major cause of injury at classrooms : striking against or struck by other objects

→ major cause of injury at play ground: striking against or struck by other objects and fall

1-2. Problems drawn by survey on Bicycle Helmet Use

- Promotion of helmet use on bicycles

Most students own bicycles, but only 25% of them have helmets and less than 10% wear them.

1-3. Problems drawn by Workshop

- Prevention of Bicycle accidents
- Improvement of skills of bicycle ride
- Improvement of knowledge about traffic safety, including traffic rules, manner of bicycle use



1-4. Others(Challenges or suggestions from the Community)

- Ensuring children's safety in the community

cf. Improvement of environment and expending activities such as Eyes of Love



2. Goals

2-1. No injury at School

Decrease injuries (5,636 in the school year of 2008) by about 36 % (5,636cases) by 2012.

Reference: 4,734 cases in 2009

→Decrease of injury cases: 29 cases to 18 cases per day

2-2. Improvement of helmet use on bicycles

Table 1 Student who were bicycle helmets among those who own bicycles

Grade	Student who were bicycle helmets among those who own bicycles		
	Nov.2008	May. 2010 (Mid point)	Nov. 2012 (Goal)
1	21.1%	42.8%	90%
2	9.9%	57.3%	90%
3	22.6%	37.1%	70%
4	1.4%	21.3%	70%
5	0%	35.0%	50%
6	0%	6.5%	50%
Total	8.8%	35.3%	70%

※Goal is set up as 70% of student wearing bicycle helmet by November 2012.

2-3. Extension of days with no traffic Accidents

The school made the record of 380 days with no traffic accident on May 31 2010. However, an accident happened on the 381st day. Therefore, extension of record with no accident is now set up as the school's next goal.



2-4. Improvement of awareness and behaviors among students

2-5. Establishment of good relationship among students

Put extra effort on building better relationship among student so that more students answer "being in good terms with other students" in the survey of school life.

V. Activities based on 7 indicators

Indicator 1

An infrastructure based on partnership and collaboration, governed by a group of teachers, pupils, technical staff and parents responsible for safety promotion in school

1-1. System of Cross Sectional Collaboration

a. Shimizu Kids Sound Network Coalition

For safety and health of students at Shimizu Elementary School and all children in the community, parents, Shimizu Elementary School and all relative organizations are working together by forming the network coalition.

The network has been working for children's safety through improvement of traffic safety and instruction of safety in their daily lives in collaboration with various parties in the community. Besides, the network also work with the Student Club, various committees and Teacher's Workshop to share information related to safety and develop effective measurements.

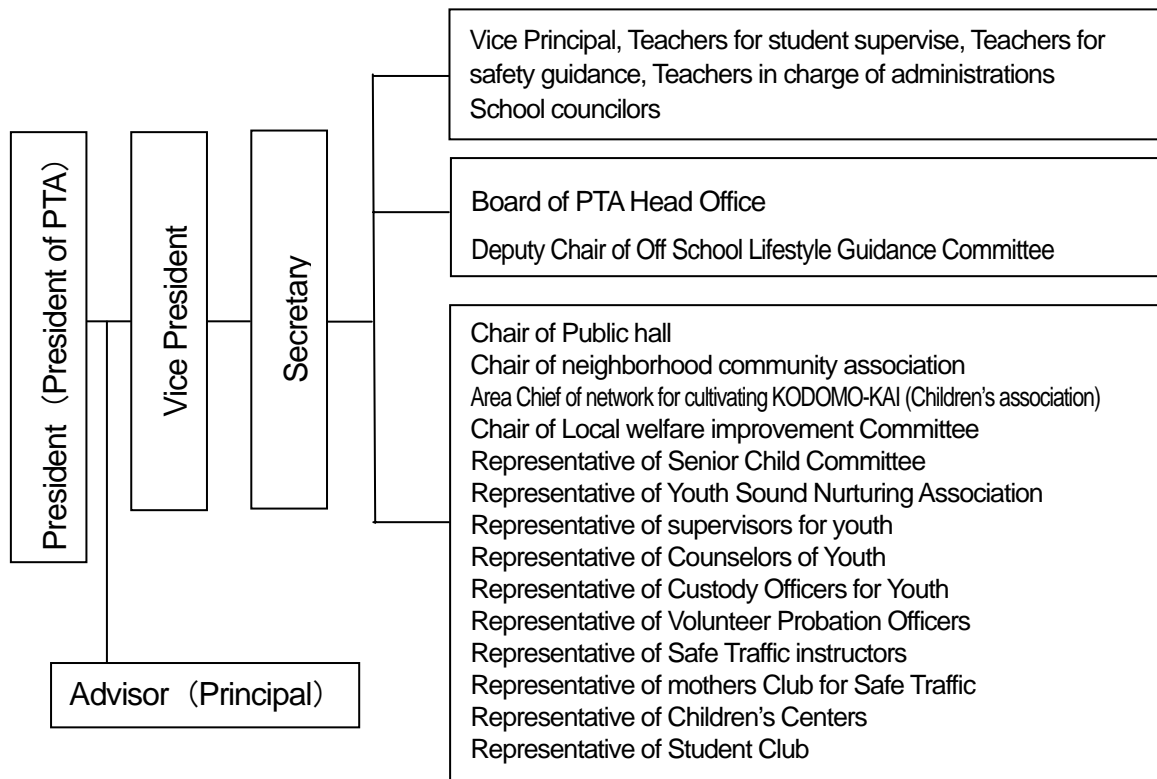
Furthermore, the network has been taking a leading role to improve children's safety as an assigned pilot program for the Safe Community project of the city.



Members

School Principal	School Vice Principal
Teachers for student supervise	Teachers for safety guidance
Teachers in charge of administrations	School councilors
Board of PTA Head Office	Representatives of Fathers Committee
Deputy Chair of Off School Lifestyle Guidance Committee	Chair of Public hall
Chair of neighborhood community association	
Area Chief of network for cultivating KODOMO-KAI (Children's association)	
Chair of Local welfare improvement Committee	Representative of Senior Child Committee
Representative of Youth Sound Nurturing Association	Representative of supervisors for youth
Representative of Counselors of Youth	Representative of Custody Officers for Youth
Representative of Volunteer Probation Officers	Representative of Safe Traffic instructors
Representative of mothers Club for Safe Traffic	Representative of Children's Centers
Representative of Student Club	

[Shimizu Kids Sound Network Coalition]



b. Organizations in school which work with Shimizu Kids Sound Network

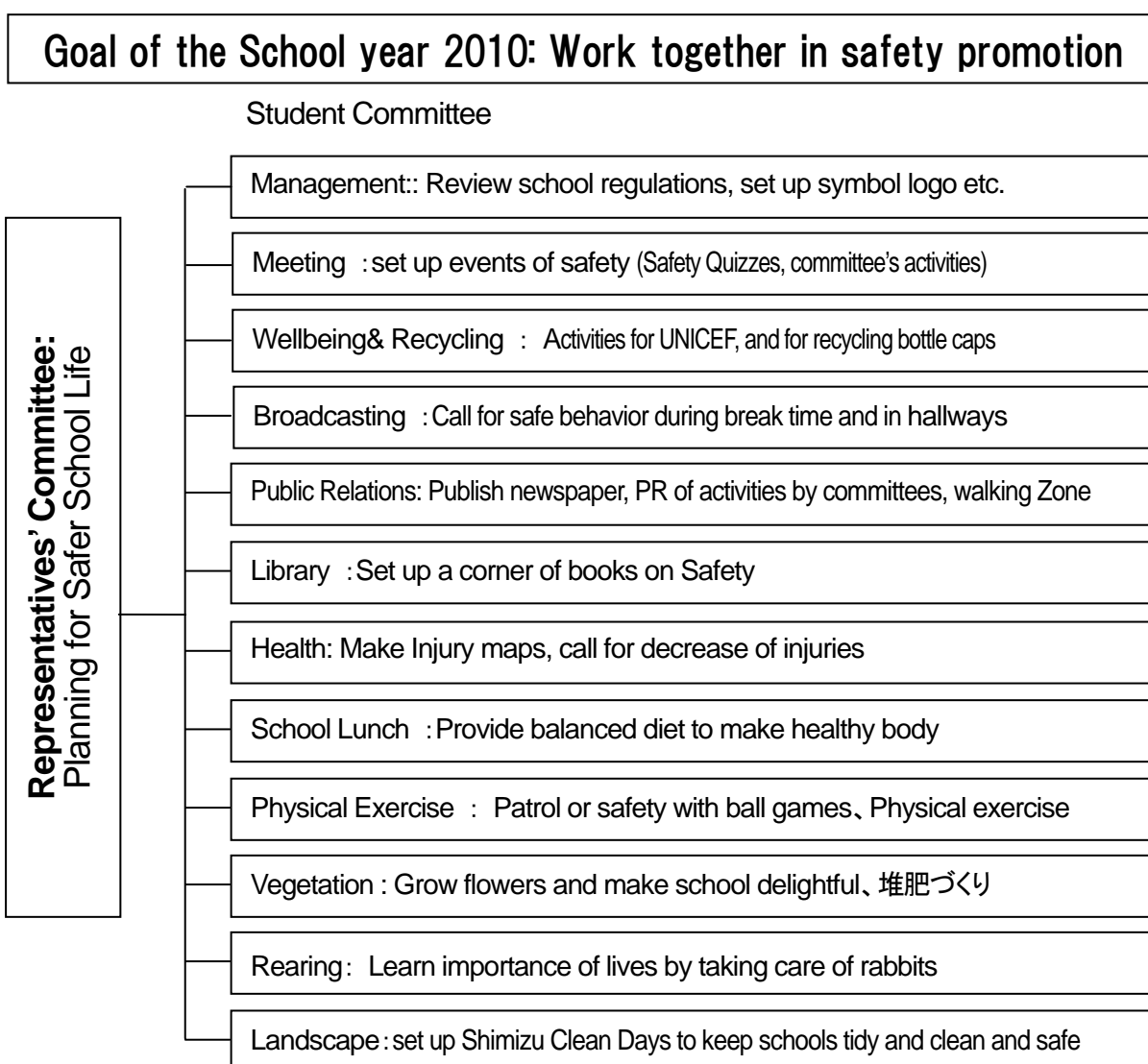
b-1 Students Board (児童会) and student committees

Student board takes leadership to develop measurements for safety promotion at the following committees which consist of grade 5 and 6.

The students' board also works with the Shimizu Kids' Sound network for safety promotion by exchanging information about safety issues such as safe commuting.



[Organization of the students' board]



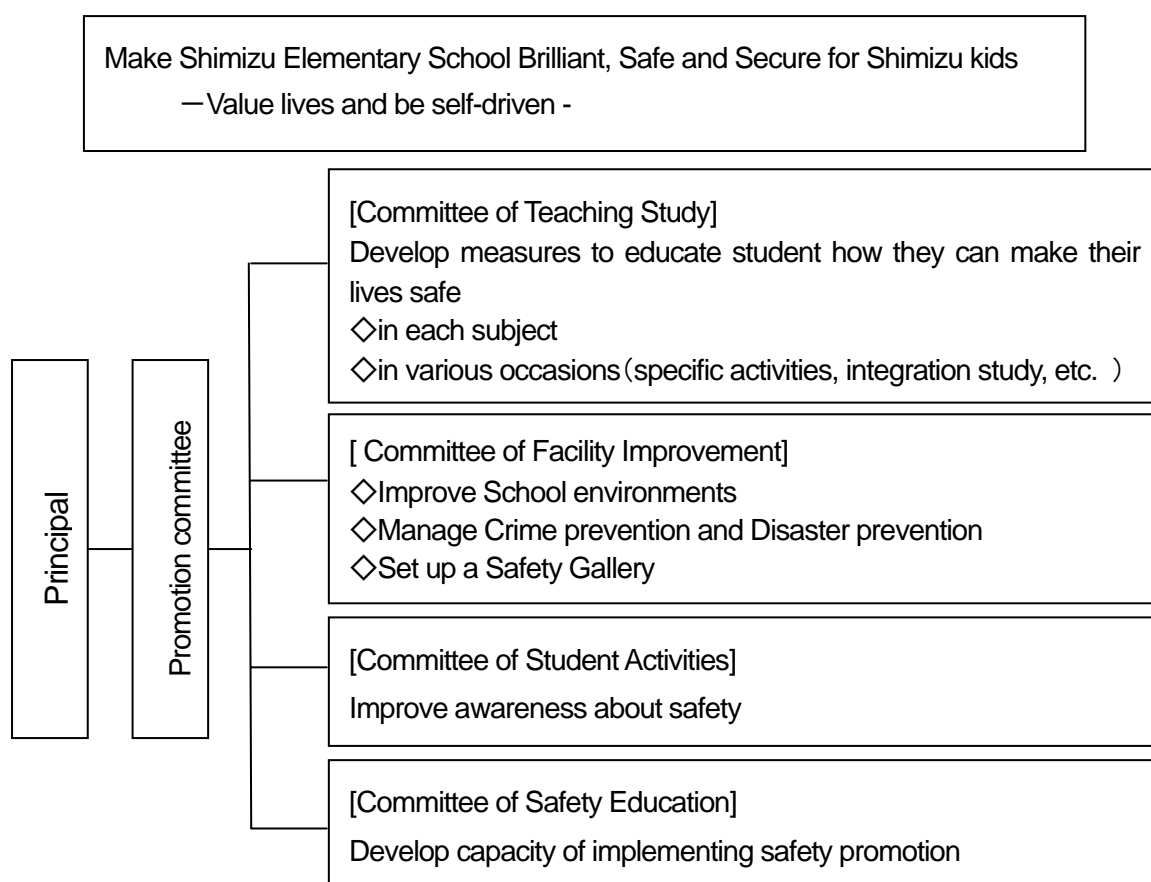
b-2 Teachers' Workshops (校内研修会)

The workshop has been organized with all teachers at Shimizu Elementary School and is operated by their voluntary contribution to solve problems in their every day educations.

In the three years, 2007-2009, the workshop had focused on improvement of language skills with which students can establish good relationship with others based on sincere communication.

In this school year, the workshop focuses on education to grow student become to cherish lives and to take action based on their own decisions.

[Organization]



Indicator 2

Safe School policies, determined by the School Board and the Community Council in a Safe Community setting;

Shimizu Elementary School has been working for safety promotion based on the concept of Safe School especially after being assigned as a pilot program of Safe Community Atsugi Project in 2009. In that effort, Shimizu Kids Sound Network, which consists of parents, teachers, school staff, and residents, has been taking leading roles.

2-1 Shimizu Elementary School Education Plan

In the School Education Plan, safety is given high priority as seen below;

➔ School Slogan :

Make Shimizu Elementary School Brilliant, Safe and Secure for Shimizu kids

➔ Goal of School Education;

Educate students to become strong and spiritually rich

➔ Goal of students

Be “Clever”, “Kind”, “Honest” and “Brave”

a Emphasized Topic “Safe and Healthy body”

- Improvement of school environment so that students, teachers and all staff can be safe
- Health promotion by students' self-motivated activities
- Reinforcement of education for traffic safety ('0' Zero Traffic Accident)
- Implementation of dietary and lunch education
- Implementation of fitness with existing resources such as the school yard



b Practical Approaches

- Educate students to improve awareness of importance of Safety
- Enhancement of safety check
- Prevention of injuries through spontaneous activities by the student club and various student committees
- Maintenance of physical strength and health promotion through dietary education and fitness
- Enlightenment by publishing news letter “Hoken-Kenko DAYORI”
- Improvement of contents of traffic safety class including safe bicycle ride
- Improvement of contents gym classes (体育化授業)
- Make the use of Safety Map

2-2 Goal among students

「Try to improve awareness of safety
together at Shimizu Elementary School」

2-3 Goal of PTA in 2010

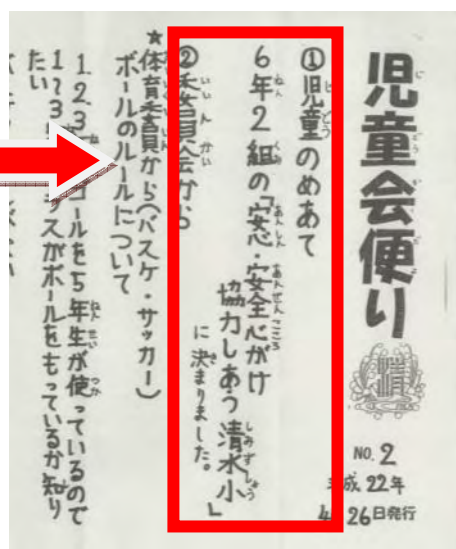
PTA has been working for sound upbringing of youth and capacity building for parents. And more, it plans programs and put them into practice based on the school education policies to solve current problems

in the community. For effective achievements, PTA work in collaboration with various organization such as Atsugi PTA Association.

Especially, in this school year, PTA is taking important roles in the Atsugi's Safe Community projects by taking participating in activities and meetings as a member of the Shimizu Kids Sound network which also contribute to safety promotion at Shimizu Elementary School based on the concept of International Safe School

2-4 Purpose of Shimizu Kids Sound Network Coalition (citation)

Contribute to community development so that all residents including children live safe by developing current activities for children's safety to those for which all community members work together.



Indicator 3

Long-term, sustainable operational programs covering both genders and all school ages, environments, and situations

3-1. Injuries and Safety at school

3-1-1. Mapping spots of injury occurrence at school

Student put collared dots on a spot where they get injured on map of school property on the wall.

To be able to see where injuries occurred improve awareness of safety among students.

Students also find dangerous spots and put safe measures.



3-1-2. Improvement of awareness about Safety

To improve awareness about safety among students, every class set up goal for better health every month. 'Safety Quizzes' is also used to improve awareness of safety among students.

3-1-3. Injury prevention inside school buildings

The Student Board and committees raise caution about accidents and injuries by informing about time place and cause which injuries have occurred most frequently based on analysis of injury data.

Besides, considering that the leading cause of injuries is striking against or struck by other objects, students discussed about countermeasures at the representatives' meeting. As a result of the meeting, it was found that striking against or struck by other objects often occur when students act funny or are caught by bags hanged beside desks.

Therefore, they informed it by the newsletter with come cases to improve awareness about safety. Then each class had discussion to make rules to make safe environment such as not hang any bag beside desks. Students will continuously make rules for further improvement of safety.



3-1-4.School Safety Patrol

Students go patrols called ‘School safety Patrol’ to find risks of accidents or injuries on campus. After the patrol, students discuss to come up with countermeasures.

Teachers also go patrol every month to check to find any spot to be fixed otherwise might cause accidents or injuries.

They try to deal with the risky spots immediately.



3-1-5.Set up slop to the play ground

Since many students have fall on the slop between school building and school yard, the slop was coated with anti-slip asphalt. Moreover, the slope was assigned as “Walking Zone” as well as setting up a rule to walk on the slope.



3-1-6. Installation to of tools for fall prevention

Some windows were not attached by verandas. And not having verandas outside windows was considered dangerous when they are kept open since students might fall from there.

Therefore, for windows above the 2nd floor, the school installed equipments with which windows cannot be full opened.



3-1-7. providing information about Risk Points

Members of Shimizu Kids Sound Network such as a president of neighborhood association report to Shimizu Elementary School whenever they find what might result in accidents in the community. With the information, the school can take actions such to prevent children's accidents in the community.

3-1-8. Lectures on Importance of Life

At the class of morality, students learn about importance of life, how to improve capacity to predict and avoid risks. For example, at the grade 3, students learn preciousness of life by learning life stages of animals in the nature and at the grade 5, each student takes responsibility to raise fish from its birth to death to learn importance of life.



3-1-9. Regular Instruction of Safety

In order to improve awareness about safety, teachers regularly provide instructions about safety related issues such as following traffic rules, wearing bicycle helmets.

Additionally, survey is conducted to see how many students have crime prevention buzzers on the 5th day every month. It is also checked if students spend their time in safe ways on holidays and if they know unsafe places where they are not supposed to play.

Moreover, school principal by calling for effort to keep safety by appealing to extend days with no traffic accident.

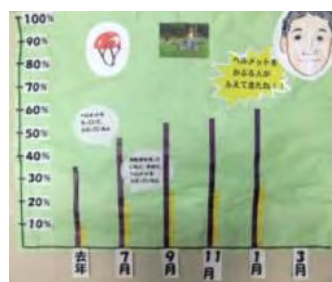


3-2. Traffic Safety

3-2-1. Enlightening of Safe bicycles

The following measures are taken to improve awareness and behavior for safety promotion among students.

- Distribute flyers to promote bicycle helmet use
- Post up graphs to show how many students to wear bicycle helmets



3-2-2. Promotion of parents to purchase bicycle helmets by PTA

Besides approaches to students, PTA work to improve awareness and understanding about safety among parents by calling for parents to purchase and wear bicycle helmets. to parents.

At the PTA forum in 2009, various types of helmets were demonstrated and survey was conducted to find reasonable price of helmets. In 2010, PTA president emphasized importance of wearing helmets on bicycle by wearing a helmet during his speech.



3-2-3. Trainings for safe biking

Safe Bicycling Training is conducted to teach right bicycle ride, manners of bicycle ride. As a result of the trainings, in 2009, students participated to the bicycle ride competition in Kanagawa Prefecture and won 4th place.



3-2-4. Improvement of training course for bicycle riding

Training course for improvement of bicycle skills on campus was renovated to provide better environment to student. So that students can have training to participate to the bicycle ride contest.



3-2-5. Community Safety Map

Students make safety maps. Children find risky spots and where they feel unsafe by walking around in the community. Then they put all information on safety maps. This program helps children to learn how to predict and avoid risks.



3-3. Crime Prevention

3-3-1. Provision of Safe Buzzer (students)

Atsugi City provides Safe Buzzers to all pupils when they enrolled to elementary schools. Pupils are told to carry the buzzers not only when they go to school and come home but also when they go out after schools.

At Shimizu Elementary School check the buzzers if they are at fault at every morning meeting. Moreover, to promote to carry the buzzers, on the 5th day of every month, graph is posted on the wall to show how many students carry the buzzers

3-3-2. Training for crime prevention (for teachers)

In order to protect students when they are exposed to danger of crimes, crime prevention training classes are held for teachers every other year. At the class, a security company gives lectures about how to avoid risk and lead students in safe situations.

3-3-3. Crime Prevention Study meeting (for teachers)

The school has been putting effort for crime prevention by installing security cameras and checking visitors at the entrance. In addition to those efforts, to build individual's capacity and systems to avoid any risk and protect lives of students and teachers, training courses are regularly held. In 2010, for example, workshops were conducted by inviting a security company to learn how to respond suspicious individuals when they break into the campus.

3-3-4. “Eye of Love” activities

Members of Senior Club, Safe Traffic Instructors, Mothers Club for Traffic Safety, PTA and other organization stand on the route to school to keep their eyes on children's safety.

3-3-5. Safety Vest

Community members wear “Safety Vest” at safety related activities to demonstrate that their community is conscious about safety promotion including crime prevention



3-3-6. Expanding Shelter Points

To protect students from suspicious individuals, houses and shops are assigned as Shelter Points where students ask for help in emergency. At the present, there are 850 houses and shops assigned as Shelter Points

Since the signs of shelter points in front of houses and shops shows high consciousness about children's safety, it contributes to prevent crime in a way.



3-3-7. Network for Information Sharing

Shimizu Kids Sound Network provides information when suspicious individuals are found and when students leave school for home at different time by cell phones and emails.

Indicator 4

Programs that target high-risk groups and environments, and ones that promotes safety for members of vulnerable groups

4-1 Bicycle users

4-1-1. Campaign for bicycle helmet use and posting graphs to show how many students wear helmet

(also described in p28)

The following measures are taken to improve awareness and behavior among students.

- Distribute flyers to promote bicycle helmet use
- Post up graphs to show how many students to wear bicycle helmets

4-1-2. Training for safe bicycle ride

(also described in p29)

Safe Bicycling Training is conducted to teach right bicycle ride, manners of bicycle ride. As a result of the trainings, in 2009, students participated to the bicycle ride competition in Kanagawa Prefecture and won 4th place.

4-1-3. Pass on skills for safe bicycling

Students who are skilled in bicycle ride teach lower grade students and any students who need to improve the skills about how to ride bicycles. This activity is found effective since skilled are easily passed on from the view points of children and through friendly communication.

4-2 Safety of Younger Grades

4-2-1. Going to and coming from school in group

To maintain safety on the roads to schools, hi-grade students take low-grade students to school as groups. During walking to and from school, hi-grade students teach traffic rules and manners to improve younger children's skills to keep themselves in safe.

However, in April, at the beginning of the school year, 1st grade students go home as groups with teachers since they sometimes go home earlier than higher grade students.



4-2-2. Paring with Big brothers and Big sisters

For 1st grade students, every moment and activities at school are new. Because of the new environment, their activities and behaviors can accidentally cause injuries.

Therefore, Higher-grade students support them such as lunch serving and cleaning are supported by the 4th grade and physical exercise and jumping rope are supported by the grade 6th students for the first few months of the period.



4-3 Bullying Prevention

4-3-1. Campaigns for bullying and violence prevention

Every October has been set up as a month of bullying and violence prevention campaign". In Oct, each class discusses about measures to prevent bullying and violence and set up slogans. For example, in October 2008, effective result was recognized during the campaign such as being reported less fights and name-calling. Results at each class is recorded and published as a newsletter by students club.

4-3-2. Teachers workshop for bullying prevention

Workshops are conducted to prevent bullying among students and to learn how to solved the cases.

For example, in September 2009, teachers learned how to find and corresponded cases of bullying at early stage. It was a part of study session arranged by the vice principal at a monthly teacher meeting to discuss about accidents prevention. In November 2009, teachers made a manual for bullying correspondence through workshop during a meeting to learn about student education.

Indicator 5

Programs that document the frequency and causes of injuries –both non-intentional (accidents) and intentional (violence and self-inflicted);

Information about frequently and occurrence of injuries is collected by the school. Then, the school and Shimizu Kids Sound Network analyze the information in collaboration with the surveillance committee for Atsugi Safe Community Programs.

5-1.Collection of injuries data

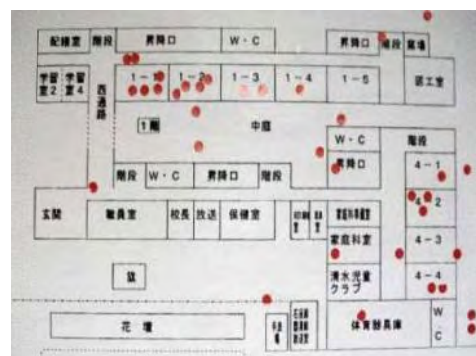
School nurse records data about injures occurred in and around school property.

She keeps records on when injuries occurred, where in the school injuries occurred, why injuries occurred, what types of injuries, and where of students bodies are injured



5-2. Data Collection on spots of jury occurrence in campus

Student put dots on place of injury occurred on a map posted on the wall, every time they get injury.



5-3. Survey on bicycle helmet use

Survey was conducted to all students at Shimizu Elementary School to see; how many students have bicycles; how many students have bicycle helmets; how many student where helmets on bicycles.

This survey has been conducted every month since in November 2008 and every two months since May 2009. The results of the survey are posted in a graph (see right photo) to improve awareness among students.



5-4. Student Attitude Survey

Survey to grasp change in awareness and behaviors related to safety among students has been conducted in June and October 2010, and February 2010. This survey also aims to see how safety education and supervise can effect on students' awareness and behaviors.

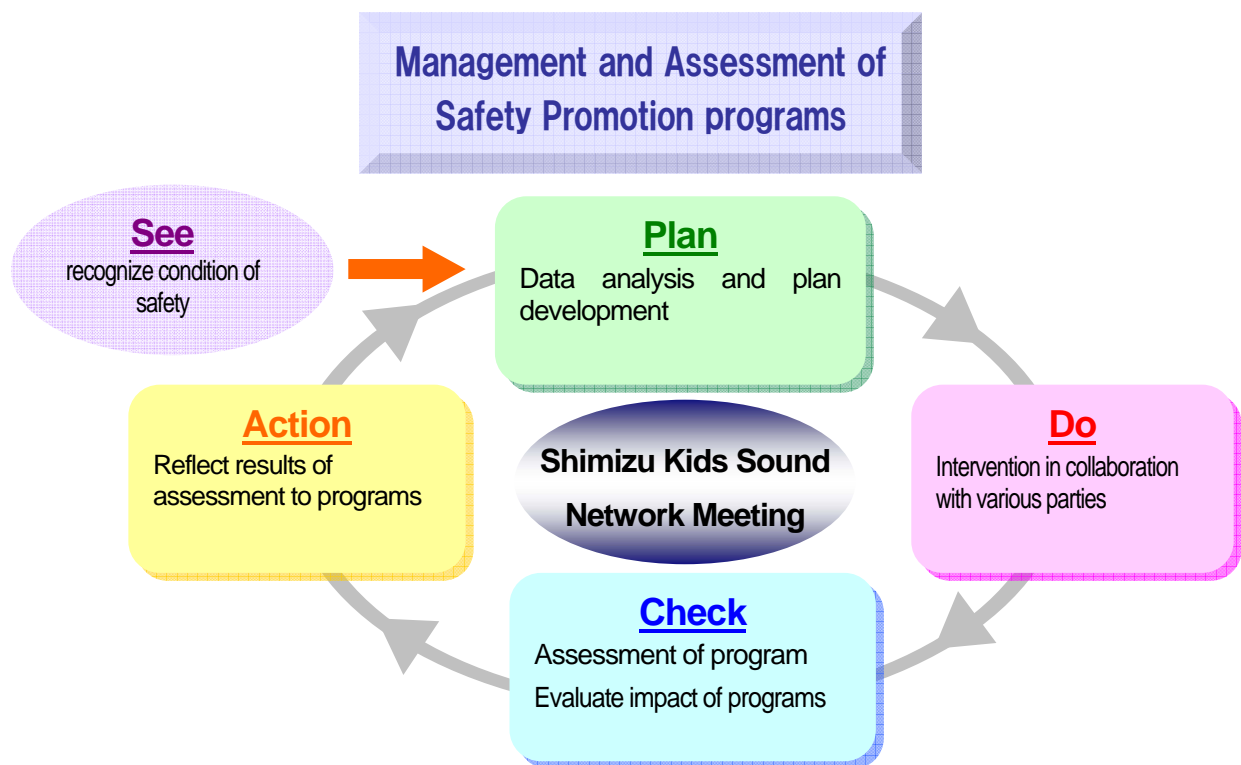
5-5. Student Survey for better school (July and December)

Survey on school life is conducted every July and December. From the results of the survey, teachers can see if students have good relationship with others and school is a comfortable place for students. Negative answer might be indicating possibility of bullying or violence among students.

Indicator 6

Evaluation measures to assess policies, programs, processes and the effects of change;

Shimizu Kid Sound Network is in charge of program management based on the following assessments;



6-1. inside assessment

6-1-1. Injury surveillance at school

Collect and analyze injury related data at the nursing room

Goal; 5,636 cases in 2008 → 36 % decrease by 2012 (around 3,600 cases)

Cf. 4,734 cases in 2009

6-1-2. Survey on use of bicycle helmet

Ratio of students who wear helmets on bicycles among those who own bicycles is going to be examined by analyzing result of Survey on use of bicycle helmet.

Goal; 8.8% in Nov. 2008 → 70% by Nov. 2012

Cf. 35.3% in May 2010

6-1-3. Expand day with no traffic accident among student, teacher and school staff

As of May 30, there has been no traffic accident for 380 days.

6-1-4. Change in students' awareness and behavior

Student Attitude Survey, conducted every four months, is used to see change in awareness and behavior related to safety promotion among students.

6-1-5. Student Survey for better school

The results of the Student Survey for better school are made the good use for improvement of school life for students.

6-2. Assessment by outside experts

In February 2009 and June 2010, experts of International Safe Community and safe School were invited in Korea, Taiwan and China to give guidance and advices for efforts of Shimizu Elementary School.

Indicator 7

Ongoing participation in Safe Schools networks – at community, national and international levels

Nov. 2008	Make a presentation at the Launching Forum for Safe Community
Feb. 2009	Have site visit by Safe Community experts in Asia region
Mach 2009	Visit designated ISS schools in Taiwan
April 2009	Shimizu Kids Sound Network was assigned as one of pilot programs of Atsugi City Safe Community Project.
Sept 2009	Make a presentation at the 13rd Integration forum 2009 in Kanagawa
Nov. 2009	Make a presentation at the Launching Forum for Safe Community
Nov. 2009	Visit a designated ISS school in Korea
Feb. 2010	Make a presentation at the 31 st Elementary and Junior-high schools' PTA forum in Atsugi
March 2010	Attend to the ISS designation Ceremony of Ikeda Elementary School attached to Osaka Kyoiku (Normal) University
March 2010	Participate to the forum for school safety in Asia and Pacific regions at Ikeda Elementary School attached to Osaka Kyoiku (Normal) University
March 2010	Make a poster presentation at the 19 th International Conference on Community Safety Promotion in Korea
July 2010	Have site visit by Safe Community experts in Asia region
Aug. 2010	Have a workshop by inviting teachers from Ikeda Elemenray school attached to Osaka Kyoiku(Normal) University



The 13rd Integration Forum 2009 in Kanagawa



Launching Forum for Safe Community Projects



The 31st Atsugi's Elementary & Junior High School PTA forum



Attended to Ikeda Elementary School ISS Designation

VI. Future Perspective

1. Long Term Goal

- a. Decrease accidents and injuries at school settings
- b. Build capacity of pupils to predict and avert risks of accidents and injuries among pupils.
- c. Improve safety at school as parts of community safety by strengthen partnership with community as well as collaboration among students, parents, teachers and school staff.



2. Future Development

- a. Enhancement of infrastructure for ISS operation based on collaboration
- b. Sustainable development of safety promotion programs
- c. Comprehensive improvement of safety for all situations and people related to school safety including teachers, staff, parents, residents as well as students
- d. Continuous operation of programs which record frequency and causes of injuries
- e. Ongoing assessment and improvement programs
- f. Active participation to international and national network of Safe School
- g. Promotion and enlightenment of the International Safe School





Make Our School Brilliant, Safe and Secure with International Safe School programs

インターナショナルセーフスクールで
しみずっ子の光り輝く安心・安全な学校を

Shimizu Elementary School

3-8-1 Tsumada-Nishi, Atsugi City, Kanagawa Prefecture

Japan, 243-0815

tel: (046) 221-4210 fax: (046) 221-4539

e-mail: shimizu-es@edu.city.atsugi.kanagawa.jp

This application report can be downloaded from the web site of Shimizu Elementary School.